

Walker BTM Reference Guide Ford Powerstroke 7.3L



Walker #21470 'Big Truck' muffler installed



Walker muffler install, looking forward



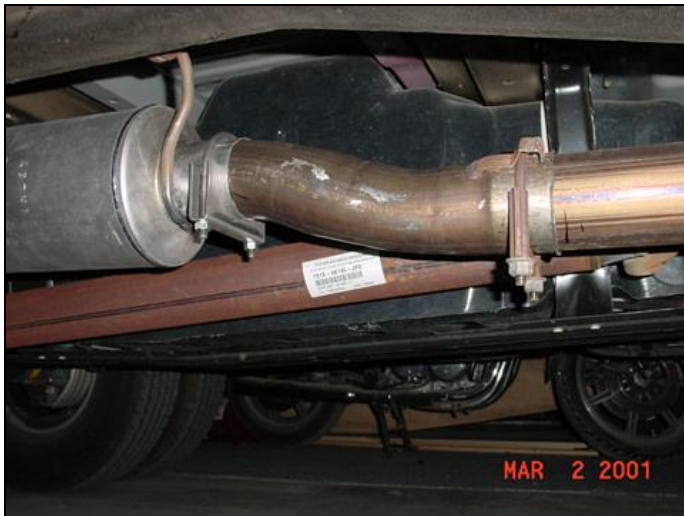
Close up of muffler install, looking back.



Test Fitting Walker #21470 muffler



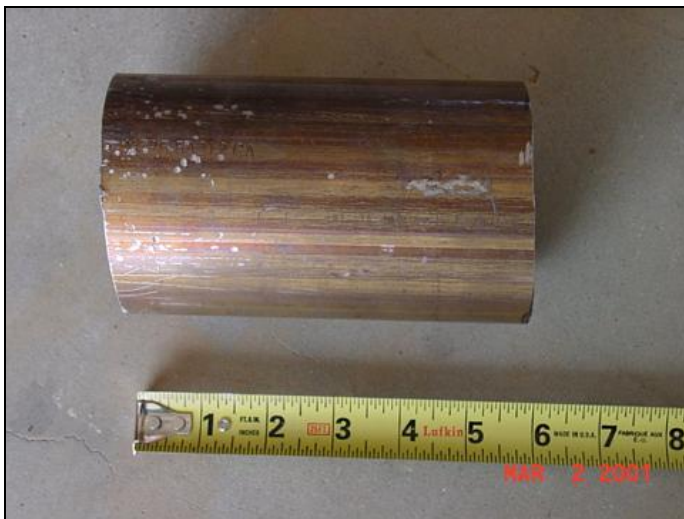
Front muffler hanger welded on (from the stock Ford muffler)



The 'S' bend was rotated 180 degrees
The hardest part of the install was getting this piece off the stock system, as the clamp 'crimped' it in place.



Factory 'S'-bend that was removed and cut.



6" section of stock pipe that was cut-off



Stock 3.5" diameter exhaust



Front mount details, showing the muffer hanger, removed from the stock muffer and welded to the Walker muffer. Also shows the position of the relocated front muffer hanger bracket. The stock front muffer hanger bracket, that was relocated forward, about 12", to support the longer Walker muffer. Use existing bolt hole in the frame.

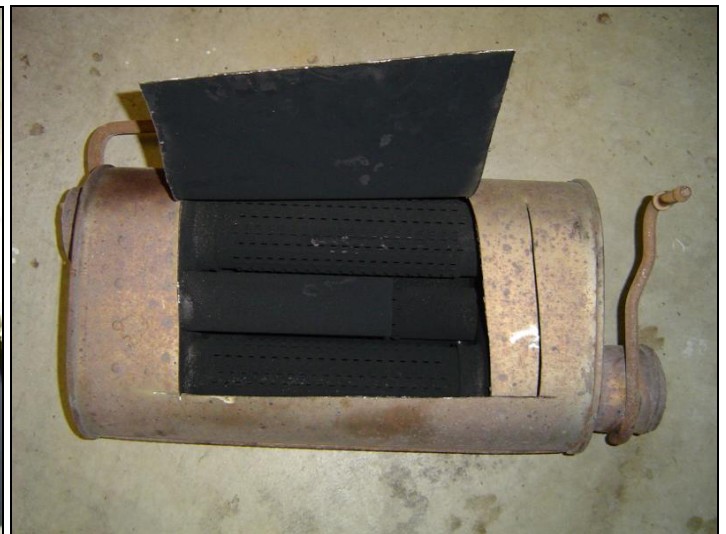
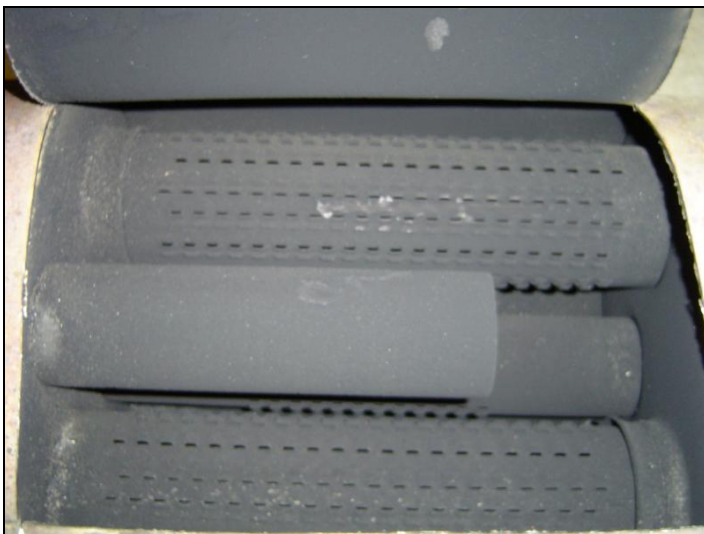




Use standard muffler hanger for rear muffler support details. Stock muffler hanger to be removed and welded to the Walker muffler.



Stock muffler view with inlet on the left. You can see how HOT this muffler got. EGT's have dropped 150F with the Walker muffler.



Stock muffler cut open to show restrictions.

Installation will vary on the newer 2002-3003 7.3L



Rear Mount



Mufflers Side by Side from a 2002 7.3L



Ready for the install



Front mount

Questions: Send email to Support@dfuser.com

Visit us on the web: <http://www.dfuser.com>

**dfuser.com
108 Evergreen Road
Georgetown, TX 78628-9500**